



DSH-UP Insulated Drain Hose

For drain-up piping



- Exclusive insulated hose for drain-up piping
- Easy to adjust, quick to install



- No cement or adhesives needed:
Less risk of leaking



Insulated Drain Hose

| Code | Description | Qty |
|-------|----------------------------------------------------|-----|
| 84306 | DSH-UP20E20E-07 Elbow to Elbow 27.5" | 10 |
| 84307 | DSH-UP20E20E-10 Elbow to Elbow 40" | 10 |
| 84308 | DSH-UP20E20S-07 Elbow to Straight Coupler 27.5" | 10 |
| 84309 | DSH-UP20E20S-10 Elbow to Straight Coupler 40" | 10 |

FEATURES

- Exclusive hose for drain-up piping
- Easy to adjust position
- Quick to install
- Less risk for water leakage
- Pre-insulated hose - exclusive insulation technology
- Pre-connected hose with fittings - no cement or adhesives needed
- Transparent fittings - visible to insure a secure fit and water-flow check
- Water leakage check sheet

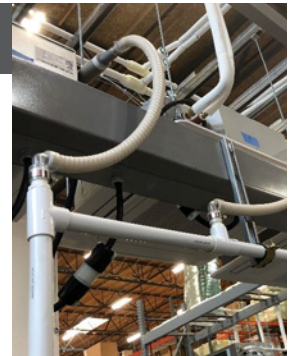
Drain-Up Hose Kit

Application

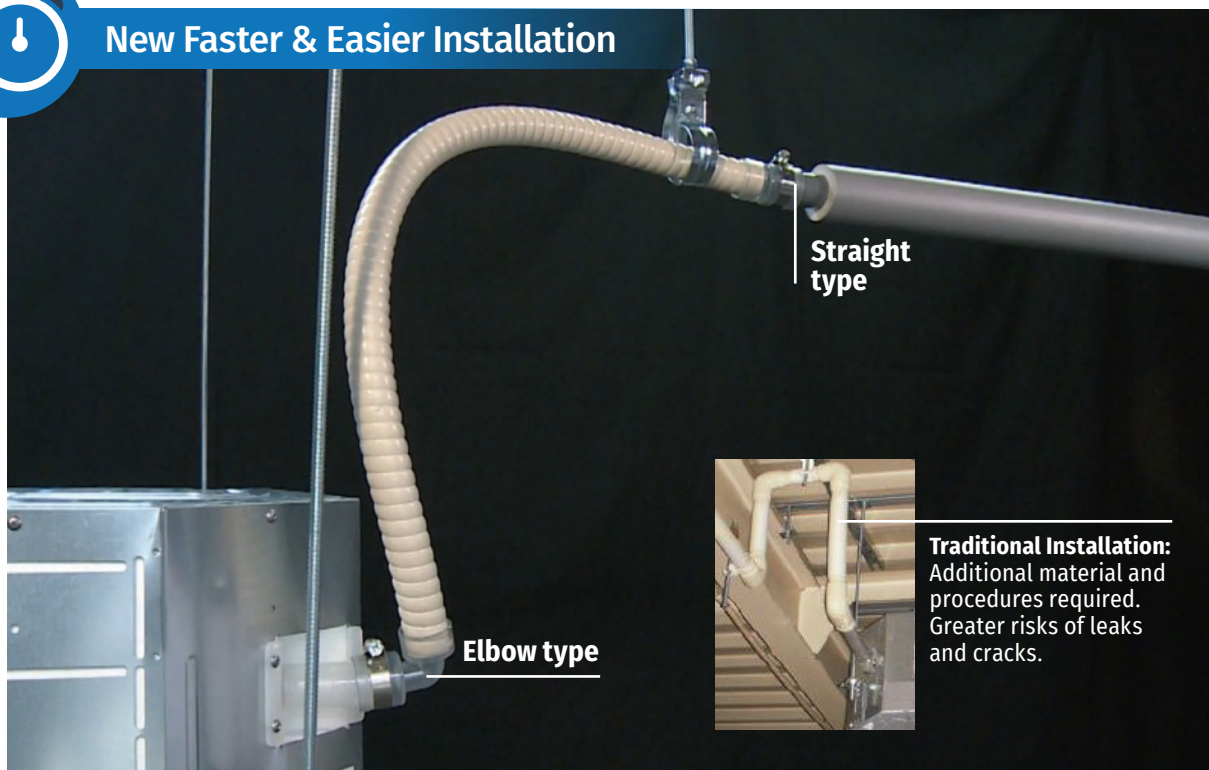
Drain-up hose kit for indoor A/C unit. These insulated drain hoses will greatly reduce install time, since there is no need to cut and cement plastic pipes for the drain assembly.

Recommended for

- Exclusive for indoor use
- Commercial HVAC units
- Ceiling cassette
- Ducted concealed



New Faster & Easier Installation



Traditional Installation:
Additional material and procedures required. Greater risks of leaks and cracks.

RectorSeal, LLC 2601 Spenwick Drive - Houston, TX 77055 800-231-3345 rectorseal.com

A CSW Industries Company. RectorSeal, the logos and other trademarks are property of RectorSeal, LLC, its affiliates or its licensor's and are protected by copyright, trademark and other intellectual property laws, and may not be used without permission. RectorSeal reserves the right to change specifications without prior notice.
©2019 RectorSeal. All rights reserved. R50524-1019