

EZ fitting feature and pressure data

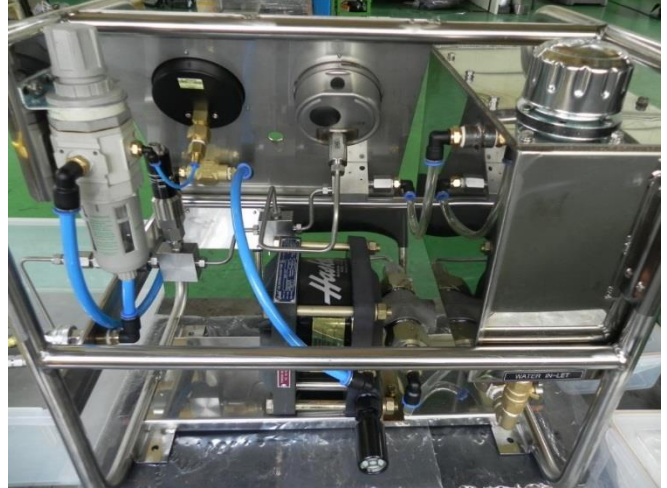


	SmartLock EZ fitting	Remark
Feature	<p>Flare connector Union Reducer Elbow</p>	Swage fittings are available from mid of May, 2017
Seal Method	<p>Metal to Metal</p>	<p>No soldering No Welding No Brazing No Flaring No Leaking</p>
Working Pressure	110 bar (1,595 psi)	Working Pressure test For R-717 (Ammonia)
Burst pressure	<p>Over 230 bar (3,335 psi)</p> <p>1/4" 360bar (5221psi) 3/8" 270bar (3916psi) 1/2" 250bar (3625psi) 5/8" 240bar (3480psi)</p>	<p>Tested hydraulic steel tube test with our fitting. The burst pressure was 1,080 bar (15,664 psi)</p>
UL test Pressure	48 bar (700 psi)	UL Approved
Temperature	-40°C to 150°C (-40°F ~ 302°F)	
Tested refrigerant	<p>R-717 (Ammonia) : 112.8 bar (1,636 psi) R-410A (R-32 50%, R-125 50%) : 47.7 bar (691 psi) R-22 (Chlorodifluoromethane) : 49.9 bar (723 Psi) R-134a (1,1,1,2-Tetrafluoroethane) : 40.5 bar (588 Psi) R-744 (Carbon dioxide) : 73.8 bar (1,030 psi)</p>	Approved for all refrigerant gas test
Noise and vibration resistance	3D vibration test for 168 hour at 50 Hz	Test Approved
Cold / Hot test	Leave for 96 hours at -40°C/150°C and No leakage when pressurized at 48 bar	Test Approved
Warranty	12 Years (Same period as installed refrigeration)	

Burst test for copper tube



UL approved test device



Test result



1/4" 360bar (5221psi)



1/2" 250bar (3625psi)



3/8" 270bar (3916psi)



5/8" 240bar (3480psi)



Burst test for hydraulic steel tube



EZ fitting



Hydraulic Steel tube Combine



Gab : 0.03mm



Torque : 700kgf / cm

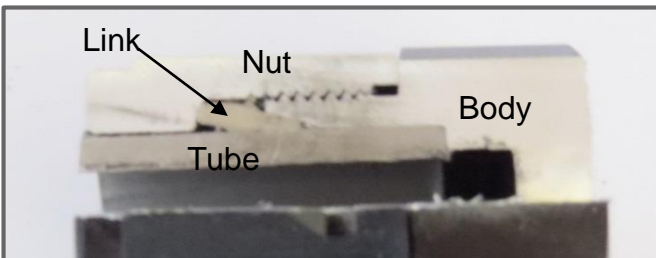


Pipe combine



Test Ready

Test Result



Burst pressure : 1,080 bar (15,664 psi)