

The Panasonic

*Select*  
**PARTNER**


Display Program




**Panasonic**

# The **Select Partnership Display** Program gives you the opportunity to:

- Display Panasonic's best-in-class merchandising solutions in order to drive more sales
- Showcase Panasonic's premium assortment of ventilation fans, controls & switches
- Demonstrate the whisper-quiet performance of Panasonic fans
- Increase your customer's understanding and preference for Panasonic's advanced ventilation solutions
- Partner with the world's leading ventilation manufacturer and expand your business.



**7" Media player shows educational content, motion sensor activated**



**WhisperFit® EZ panel opens to reveal the low profile housing design**



# Panasonic Deluxe Ventilation Fan Display

The Deluxe Ventilation Fan Display is a great way to demonstrate the whisper-quiet performance of Panasonic ventilation fans. Seeing is believing, and a Panasonic fan in action sells product.



Back panel access to media player's volume controls and SD card



Built-in brochure pocket maintains and protects literature

## Includes:

**WhisperRecessed LED** – Design Solution for Fan/Light Combinations

**WhisperGreen Select** – One Fan, Endless IAQ Solutions

**WhisperLite** – Quiet, Spot Ventilation Solution

**WhisperFit** – Fastest, Easiest Retrofit Solution

**WhisperWarm Lite** – Quiet, Fan/Heater Solution

## Additional Features:

- Steel tower with steel base display, powder coated camaro gray
- Fans and switches come pre-installed into black wood panels and are wired for electricity
- Exhaust vents on side of display for fans to quietly ventilate
- Base includes levelers for easy height adjustment



**Item #:**  
FV-DSPDLX  
**Dimensions:**  
30" W x 28" D x 84" H  
**Estimated Weight:**  
250 lbs.

# Panasonic Advanced Ventilation Fan Assortment

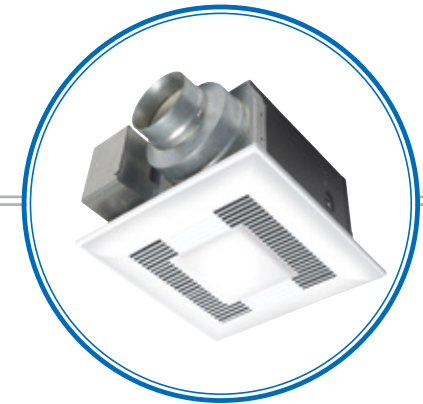
**WhisperRecessed LED™**  
VENTILATION FAN



**WhisperGreenSelect™**  
VENTILATION FAN



**WhisperLite®**  
VENTILATION FAN



## Design Solution for Fan/Light Combinations

- Architectural grade recessed fan/LED light
- Ideal for use in bathroom, living room or laundry room
- Quiet and powerful 80 CFM ventilation hidden above the ceiling
- Beautiful lighting with 6-1/2" aperture and advanced luminaire design
- Includes (1) replaceable, dimmable 14 W GU24 base LED lamp
- Adjustable lamp positioning and deeper regression reduces glare
- UL listed for tub/shower enclosure when GFCI protected
- Can be used to comply with ASHRAE 62.2, LEED, IAP, California Title 24, and WA Ventilation Code

## One Fan – Endless IAQ Solutions

- Pick-A-Flow™ (50-80-110 or 110-130-150 CFM) Speed Selector - one fan, you choose the CFM
- Plug 'N Play™ Modules allow further customization with value added features
- DC motor with intelligent SmartFlow™ technology ensures optimal CFM output
- Flex-Z Fast™ bracket system provides flexible, fast and easy installation
- Integrated dual 4" or 6" duct adapter on 50-80-110 CFM models
- Fits in 2 x 8 construction
- Light option includes Two 7W, Replaceable GU24 Base LED Lamps
- UL listed for tub/shower enclosure when GFCI protected
- Can be used to comply with ASHRAE 62.2, LEED, CALGreen and ENERGY STAR® for Homes 3.0

## Quiet, Spot Ventilation Solution

- Quiet – yet powerful – ideal for new and remodel residential applications
- (2) 13 W self-ballasted GU24 base CFL lamps and a 4W night light
- Integrated dual 4" or 6" duct adapter on 80-110 CFM models
- Fits in 2 x 8 construction
- Large Volume (190-390) CFM Options Available for Light Commercial Use
- UL listed for tub/shower enclosure when GFCI protected
- Can be used to comply with ASHRAE 62.2, LEED, IAP, California Title 24 and WA Ventilation Code

## WhisperFitEZ™ VENTILATION FAN



with 3" duct adapter

### Fastest, Easiest Retrofit Solution

- Ideal for residential remodeling
- Pick-A-Flow™ speed selector: 80-110 CFM
- Flex-Z Fast™ installation bracket provides flexible, fast and easy installation
- 5-5/8" low profile housing design fits in 2 x 6 or larger construction
- Detachable 4" to 3" duct adapter included
- Slide and snap-in junction box and duct collar further simplify installation
- Light option includes (2) 13W self-ballasted GU24 base CFL lamps and a 4W night light
- UL listed for tub/shower enclosure when GFCI protected
- Can be used to comply with ASHRAE 62.2, LEED, IAP, California Title 24 and WA Ventilation Code

## WhisperWarm™ VENTILATION FAN



### Quiet, Fan/Heater Solution

- Durable 1400W stainless steel sheathed heating element
- Totally enclosed condenser motor for long life – rated 30,000 hours continuous run
- Thermal fuse protection on motor and 3-level safety device for heater
- Quick, 1 minute warm up
- Light option Includes (2) 13W Self-Ballasted GU24 Base CFL Lamps
- 4" duct adapter / fits in 2 x 8 construction
- Minimum 20 Amp Dedicated Circuit Required
- For optimum performance, install heater no more than 8 feet from floor to ceiling



# Select Partnership Displays

## WhisperControl & EcoSwitch Display

An eye catching merchandiser that features everything your customer needs to complete virtually any ventilation fan project. Rely on these controls and switches to help keep bathroom air clean, dry and healthy.

### Includes:

**Condensation Sensor Plus - Moisture Management Solution.** Includes a seasonal moisture sensitivity selector and Minutes Per Hour (MPH) fan timer for ASHRAE 62.2 compliance.

**Preset Countdown and Hourly Timer – Preset Ventilation Control Solution.** Ideal for tenant and family use. Includes a Minutes Per Hour (MPH) fan timer for ASHRAE 62.2 compliance.

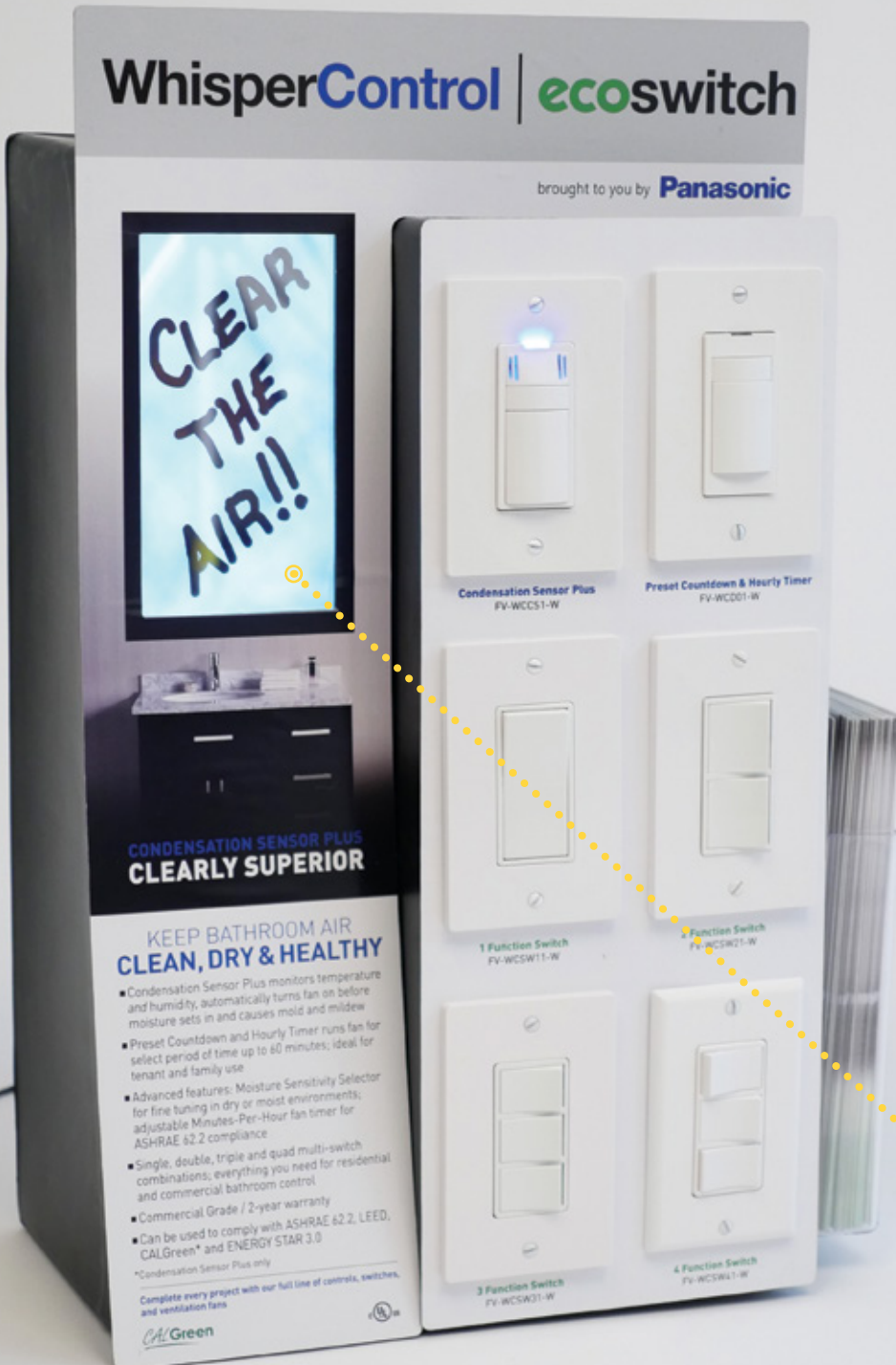
**1, 2, 3 & 4 Function Switches – Commercial grade quality, at residential grade pricing.**

### Additional Features

- Unique motion graphic panel runs on a loop, giving the appearance of condensation being cleared from a bathroom
- Showcases the environment before and after using the Condensation Sensor Plus
- Blue LED light activates as condensation clears from the mirror
- Plastic brochure holder keeps literature neat and organized

Motion graphic panel

Item #: FV-DSPSWITCH  
Dimensions: 12.5" W x 7" D x 21" H  
Estimated Weight: 10 lbs.



# WhisperControl and EcoSwitch Assortment



## WhisperControl

### Condensation Sensor Plus

- Intelligent and advanced sensor technology monitors humidity and temperature to anticipate dew point, automatically operating the fan to control moisture
- Automatic seasonal adaptability with optional moisture sensitivity selector allows fine tuning for dry or moist environments
- Adjustable Minutes Per Hour (MPH) fan timer ensures consistent and controlled ventilation throughout the day for compliance with ASHRAE 62.2
- Includes manual on/off fan control
- 20 minute delay off timer initiates once fan is manually turned on
- Can be used to comply with ASHRAE 62.2, LEED, ENERGY STAR® 3.0 and CALGreen
- 2 year limited warranty\*

\* One year additional fan warranty available when a Panasonic WhisperCeiling/Lite, WhisperValue/Lite or WhisperFit® EZ fan or fan/light is controlled by the Panasonic Condensation Sensor Plus.

## WhisperControl



### Preset Countdown and Hourly Timer

- Pre-set countdown fan timer (5-60 mins.) automatically turns the fan off to help minimize excessive run time
- Adjustable Minutes Per Hour Fan Timer (0-60mins) for compliance with ASHRAE 62.2
- Manual On/Off fan control
- Commercial Grade – 8 Amp max load, 2 year limited warranty
- Engineered to efficiently control current LED lighting and DC motor loads
- Can be used to comply with ASHRAE 62.2, LEED and ENERGY STAR® 3.0

## ecoswitch



The EcoSwitch line of products provide commercial grade quality at residential grade pricing. EcoSwitch is available in single, double, triple and quad functions to provide a complete package for all of your residential and commercial application needs.

# Select Partnership Display Program



Product Commitment



**FREE** Displays

## Select Partner Level

1

Select  
PARTNER



### Qualifications

- Minimum \$6K investment in Panasonic fans, controls & switches, on one 1 PO
- PO must include WhisperRecessed LED, All WhisperGreen Select fan and fan/lights (excluding 'S' models), 1 master pack (8 pieces) of each WhisperGreen Select Plug 'N Play module, and all WhisperControl & EcoSwitch products
- Commit to Panasonic-only ventilation displays, prominently positioned at your location

### Benefits

- Deluxe Ventilation Fan and Control Displays for **FREE (\$3.6K Value)**
- FREE window sticker advertising you as a Panasonic Select Partner
- Featured billing as a "Select Partner" on the Panasonic vent fan website
- Enhanced listing on the Panasonic Distributor Locator
- Guaranteed service level for future display updates
- Prepaid Freight for all product on the qualifying PO
- Prepaid Freight for both the Deluxe Fan and Control Display (\$150-\$200 Value)
- Bi-annual stock rotations, no restock fee with order of equal or greater value. Partner is responsible for freight
- In-Person training conducted by your Panasonic Sales Rep on the displays and all product contained therein

# Select Distributor Level

2



## Qualifications

- Minimum \$5K investment in Panasonic fans, on one 1 PO
- PO must include WhisperRecessed LED, All WhisperGreen Select fan and fan/lights (excluding 'S' models) and 1 master pack (8 pieces) of each WhisperGreen Select Plug 'N Play module

## And/Or

- Minimum \$1K investment in WhisperControl & EcoSwitch, on one 1 PO
- PO must include an assortment of all WhisperControl & EcoSwitch products

## Benefits

- Deluxe Vent Fan and/or Control Displays for **FREE (\$3K/\$600 Value, respectively)**
- Prepaid Freight for all product on the qualifying PO
- Prepaid Freight for the Deluxe Fan and/or Control Display (\$150-\$200 Value)
- Annual stock rotations, no restock fee with order of equal or greater value. Partner is responsible for freight

# Merchandising Distributor Level

3



## Qualifications

- Purchase a Panasonic Deluxe Ventilation Fan Display for \$800 and/or the Control & Switch Display for \$200

## Benefits

- Obtain Panasonic's premium merchandising solutions valued at \$3,000 and \$600, respectively; and enjoy No shipping costs

### Terms & Conditions

Select Partner – Customer must purchase the fans, controls and switches.

Select Distributor:

Customer has flexibility to purchase just the fans, just the controls & switches, or both.

Merchandising Distributor:

Customer buys each display. No additional inventory investment required.

Panasonic Eco Solutions of North America  
Eco Products Division  
Two Riverfront Plaza  
Newark, NJ 07102  
[us.panasonic.com/ventfans](http://us.panasonic.com/ventfans)

For Order Information  
PHONE: 866-292-7299  
FAX: 888-553-0723  
[ventfans@us.panasonic.com](mailto:ventfans@us.panasonic.com)



★★★★★ 6 YEARS IN A ROW

Design and specifications subject to change without notice.

VF15250BRO - Version 2015/2016