



Benefits of Single-Zone Duct-Free Split Mega Wall-Mounted Systems

- Inverter technology
- Available in 9,000, 12,000, 18,000, 24,000 Btu/h capacities
- All-season use—heat pump models for both cooling and heating capabilities
- Operating ranges for outdoor units of 64°F to 118°F (DB) for cooling; 23°F to 75°F (WB) for heating
- Operating ranges for indoor units of 64°F to 90°F (WB) for cooling; 60°F to 86°F (DB) for heating
- Quiet operation inside and out



About LG Electronics, Inc.

LG Electronics, Inc. is a global leader and technology innovator in consumer electronics, mobile communications, and home appliances, employing more than 213,000 people in more than 60 countries worldwide. LG's commercial air conditioning business unit was established in 1968, and offers VRF, Multi F, duct-free split systems, packaged terminal air conditioners (PTACs), and room air conditioners.

With LG, it's all possible.™

Mega Wall-Mounted

Single-Zone Duct-Free System

Duct-Free Split systems are comprised of two major components—indoor units and outdoor units—that are connected through refrigerant piping and power wiring / communications cable. These Inverter heat pump systems provide a smart alternative to both central HVAC and window-mounted air conditioners, and are available in a variety of configurations to suit different cooling and heating situations. Installation by a qualified HVAC contractor is safe and easy—little to no duct work or sheet metal is required.

Mega Systems

Mega Wall-Mount Split systems apply duct-free technology in a streamlined, low-profile design. Featuring an easier installation procedure and Inverter compressor technology, these systems are designed to save you time and money. Choosing a Mega Wall-Mount split system provides a designer an edge with individual advanced control and design flexibility. Mega Wall-Mount systems are available in nominal capacities of 3/4, 1, 1-1/2 and 2 tons. These are best suited for applications with zones that require heating or cooling, such as residential and small business office buildings.



Inverter Technology

Inverter variable-speed split systems are measurably quieter and consume less energy than conventional air conditioners. The Inverter compressor ramps up or down to match the required room capacity and maintain the comfort level. When the selected temperature is reached, the Inverter compressor operates at low speed to maintain that comfort level, thereby using less energy.

Quality Commitment

LG is committed to the success of air-conditioning projects. We provide technical support during installation, and offer a variety of classes designed for installers and service providers. Classes are conducted at LG's training centers and in field locations at various times throughout the year and upon special request.

Mega Wall-Mounted Single-Zone Duct-Free Split Systems

LS090HEV

8,500 Btu/h Cooling
9,000 Btu/h Heating



LS120HEV

12,000 Btu/h Cooling
12,000 Btu/h Heating



LS180HEV

17,000 Btu/h Cooling
19,000 Btu/h Heating



LS240HEV

22,000 Btu/h Cooling
22,000 Btu/h Heating



Inverter



Features

- Inverter (Variable speed compressor)
- Gold Fin™ anti-corrosion
- Temperature display on indoor unit
- Cooling/Heating/Fan modes
- Jet Cool / Chaos Wind
- Four (4) fan speeds
- Dehumidifying mode
- Auto operation / restart
- Condensate sensor connection
- Includes handheld remote controller

Warranty: Five (5) years parts; seven (7) years compressor.

System Model Number		LS090HEV	LS120HEV	LS180HEV	LS240HEV
Indoor Unit Model Number		LSN090HEV	LSN120HEV	LSN180HEV	LSN240HEV
Outdoor Unit Model Number		LSU090HEV	LSU120HEV	LSU180HEV	LSU240HEV
Rated Cooling Capacity (Btu/h)		8,500	12,000	17,000	22,000
Rated Heating Capacity (Btu/h)		9,000	12,000	19,000	22,000
EER		10.9	10.26	10.95	10.75
SEER		16.3	16.3	17.0	17.0
HSPF		8.3	8.5	8.7	8.5
Air Circulation	CFM (Max/H/M/L)	318 / 276 / 226 / 177	424 / 353 / 272 / 212	629 / 512 / 441 / 353	689 / 600 / 494 / 388
Fan Speeds		4 / 4 / 4	4 / 4 / 4	4 / 4 / 4	4 / 4 / 4
Dehumidification	pts. / hr.	2.12	2.76	3.39	4.88
Thermostat Range	Cooling (°F WB)	64 - 90	64 - 90	64 - 90	64 - 90
	Heating (°F DB)	60 - 86	60 - 86	60 - 86	60 - 86
Indoor Unit Sound Pressure Levels	dB(A) (H / M / L)	39 / 33 / 25	39 / 33 / 25	42 / 40 / 35	45 / 40 / 35
Outdoor Unit Sound Pressure Level	dB(A)	47	47	51	53
Power Supply (Outdoor and Indoor; Phase / V / Hz)		1 / 208-230 / 60	1 / 208-230 / 60	1 / 208-230 / 60	1 / 208-230 / 60
Indoor Unit Dimensions					
W x H x D	in.	29-3/4 x 10-7/16 x 7-1/4	34-13/16 x 11-1/4 x 8-1/4	40-9/16 x 12-13/16 x 9-13/16	40-9/16 x 12-13/16 x 9-13/16
Net Unit Weight	lbs.	15.9	19.8	27.3	27.8
Outdoor Unit Dimensions					
W x H x D	in.	28-1/4 x 19-1/32 x 9-1/16	28-1/4 x 19-1/32 x 9-1/16	30-5/16 x 21-1/2 x 11-5/16	34-1/4 x 25-13/16 x 12-9/32
Net Unit Weight	lbs.	51.1	48.5	71.4	91.9

Due to our policy of continuous product innovation, some specifications may change without notification.

©LG Electronics U.S.A., Inc., Englewood Cliffs, NJ. All rights reserved. "LG" is a registered trademark of LG Corp.

DFS-PB-AL-002-US 013M18

Job Name/Location:

Tag #:

Date:

For: ☐ File ☐ Resubmit

PO No.:

☐ Approval ☐ Other _____

Architect:

GC:

Engr:

Mech:

Rep:

(Company)

(Project Manager)

LS090HEV**Mega Single Zone Inverter**

Outdoor Unit (ODU) - LSU090HEV Indoor Unit (IDU) - LSN090HEV

**LG**
Life's Good**Performance:****Cooling:**

Capacity (Btu/h)	8,500
SEER	16.3
EER	10.90

SEER - Seasonal Energy Efficiency Ratio EER - Energy Efficiency Ratio

Heating:

Capacity (Btu/h)	9,000
HSPF	8.3

HSPF - Heating Seasonal Performance Factor

Cooling Nominal Test Conditions:

Indoor: 80°F DB/67°F WB

Outdoor: 95°F DB/75°F WB

Heating Nominal Test Conditions:

Indoor: 70°F DB/60°F WB

Outdoor: 47°F DB/43°F WB

Electrical:

Power Supply (V ¹ /Hz/Ø)	208-230/60/1
-------------------------------------	--------------

Outdoor Unit:

MOP (A)	15
MCA (A)	9
Cooling Rated Amps (A)	7.3
Heating Rated Amps (A)	7.3
Compressor (A)	6.8
Fan Motor (A)	0.5

MOP - Maximum Overcurrent Protection MCA - Minimum Circuit Ampacity

Total Power Input:

Cooling Power Input (kW)	0.78
Heating Power Input (kW)	0.78

Piping:

Liquid Line (in, OD)	1/4
Vapor Line (in, OD)	3/8
Additional Refrigerant (oz/ft)	0.22
Max Pipe Length (ft) ²	49.2
Piping Length (no add'l refrigerant, ft)	24.6
Max Elevation (ft)	22.9

Controls Features:

- 24-Hour on/off timer
- 2-Way (up/down) auto swing
- Auto changeover
- Auto restart
- Condensate sensor connection
- Energy saving
- Inverter (variable speed compressor)
- Jet cool
- Self-cleaning indoor coil
- Sleep mode
- Ultra quiet operation

Operating Range:**Outdoor Unit:**

Cooling (°F DB)	64-118
Heating (°F DB)	23-75

Indoor Unit:

Cooling (°F DB)	64-90
Heating (°F DB)	60-86

Unit Data:

Refrigerant Type	R410A
Refrigerant Control	Capillary Tube
Refrigerant Charge (lbs)	1.66
ODU Sound Pressure (±3 dB(A)) ³	47
IDU Sound Pressure ±3 (H/M/L/Sleep) dB(A) ³	39/33/25/19
ODU Net Unit Weight (lbs)	52
ODU Shipping Weight (lbs)	56
IDU Net Unit Weight (lbs)	16
IDU Shipping Weight (lbs)	21
Heat Exchanger Coating	GoldFin™

Fan:

ODU Type	Propeller
IDU Type	Cross Flow
Fan Speeds (Fan/Cooling/Heating)	4/4/4
Quantity (ODU + IDU)	1 + 1
Motor/Drive	Brushless Digitally Controlled/Direct
ODU Max Air Flow Rate (CFM)	953
IDU Air Flow Rate H/M/L (CFM)	276/226/177
Dehumidification (pts/hr)	2.12

Notes:

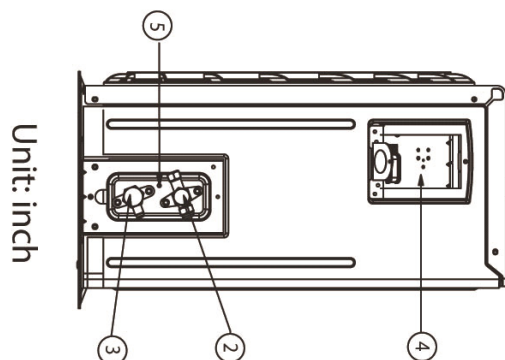
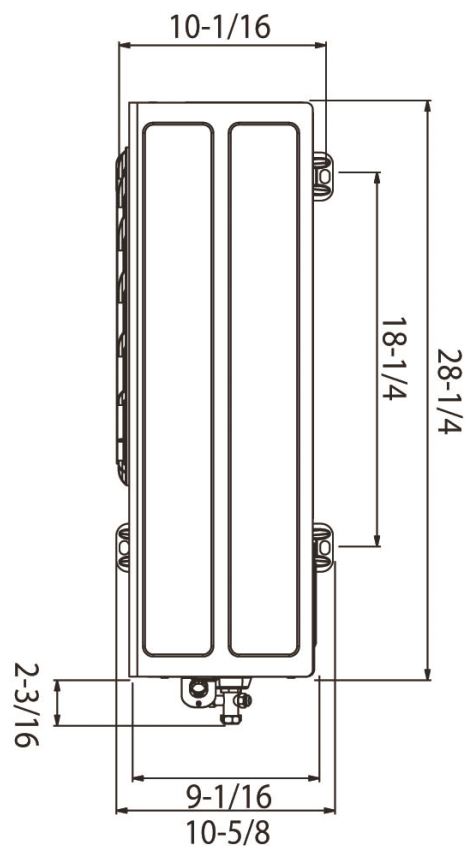
1. Acceptable operating voltage: 187V-253V.
2. Piping lengths are equivalent.
3. Sound Pressure levels are tested in an anechoic chamber under ISO Standard 1996.
4. All power/communication cable to be minimum 18 AWG, 4-conductor, stranded, shielded and must comply with applicable local and national code.
5. See Engineering Manual for sensible and latent capacities.
6. Power wiring cable size must comply with the applicable local and national code.
7. The indoor unit comes with a dry helium charge.
8. This data is rated 0 ft above sea level, with 24.6 ft of refrigerant line and a 0 ft level difference between outdoor and indoor units.
9. Must follow installation instructions in the applicable LG installation manual.

**Inverter**

Outdoor Unit (ODU) - LSU090HEV



PO No.:



Unit: inch

Item No.	Part Name	Remarks
1	Return Air Grille	
2	Gas Pipe Connection Port	
3	Liquid Pipe Connection Port	
4	Control Box	
5	Earth Screw	

Job Name/Location:

Indoor Unit (IDU) - LSN090HEV

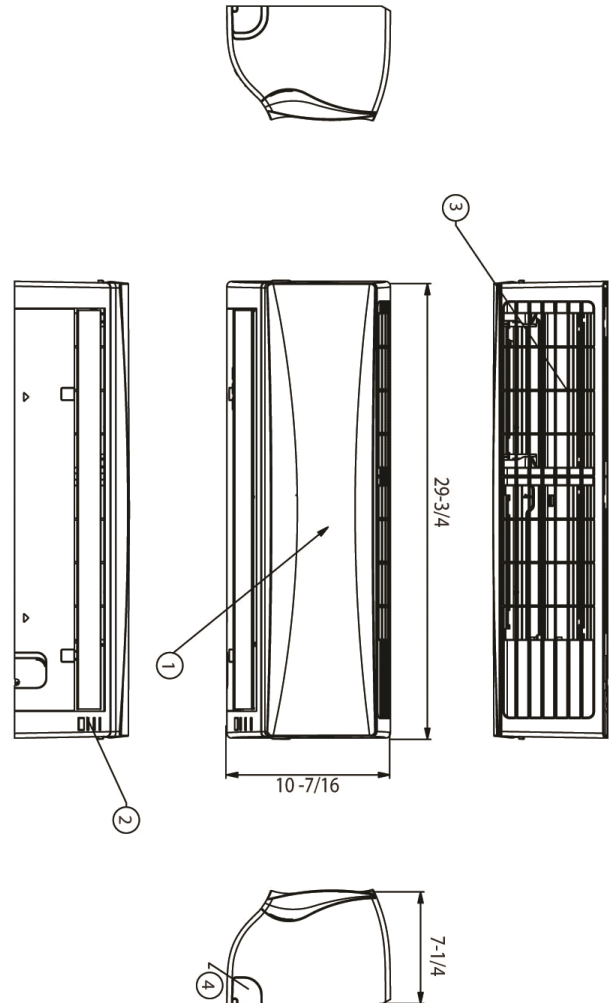
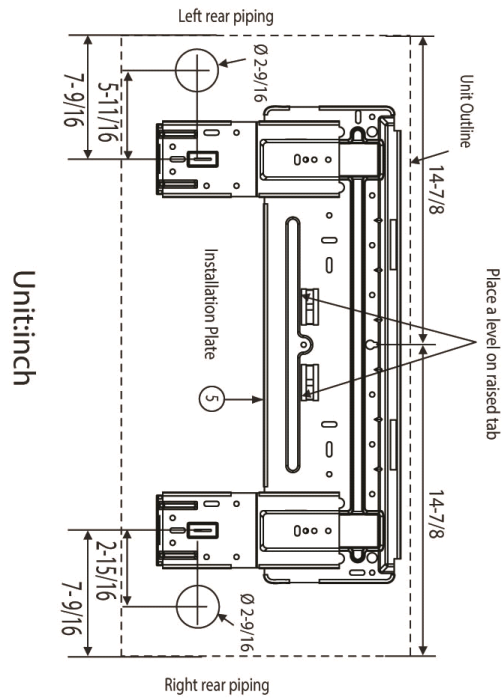
Mega Single Zone Inverter



Tag #:

Date:

PO No.:



Item No.	Part Name	Remarks
1	Front Panel	
2	Display & Signal Receiver	
3	Return Air Grille	
4	Knockout hole	For pipe and cable
5	Installation Plate	

Job Name/Location:

Tag #:

Date:

For: ☐ File ☐ Resubmit

PO No.:

☐ Approval ☐ Other _____

Architect:

GC:

Engr:

Mech:

Rep:

(Company)

(Project Manager)

LS120HEV**Mega Single Zone Inverter**

Outdoor Unit (ODU) - LSU120HEV Indoor Unit (IDU) - LSN120HEV

**LG**
Life's Good**Performance:****Cooling:**

Capacity (Btu/h)	12,000
SEER	16.3
EER	10.26

SEER - Seasonal Energy Efficiency Ratio EER - Energy Efficiency Ratio

Heating:

Capacity (Btu/h)	12,000
HSPF	8.5

HSPF - Heating Seasonal Performance Factor

Cooling Nominal Test Conditions: Heating Nominal Test Conditions:

Indoor: 80°F DB/67°F WB

Indoor: 70°F DB/60°F WB

Outdoor: 95°F DB/75°F WB

Outdoor: 47°F DB/43°F WB

Electrical:

Power Supply (V ¹ /Hz/Ø)	208-230/60/1
-------------------------------------	--------------

Outdoor Unit:

MOP (A)	15
MCA (A)	9
Cooling Rated Amps (A)	7.3
Heating Rated Amps (A)	7.3
Compressor (A)	6.8
Fan Motor (A)	0.5

MOP - Maximum Overcurrent Protection MCA - Minimum Circuit Ampacity

Total Power Input:

Cooling Power Input (kW)	1.17
Heating Power Input (kW)	0.98

Piping:

Liquid Line (in, OD)	1/4
Vapor Line (in, OD)	3/8
Additional Refrigerant (oz/ft)	0.22
Max Pipe Length (ft) ²	49.2
Piping Length (no add'l refrigerant, ft)	24.6
Max Elevation (ft)	22.9

Controls Features:

- 24-Hour on/off timer
- Energy saving
- 2-Way (up/down) auto swing
- Inverter (variable speed compressor)
- Auto changeover
- Jet cool
- Auto restart
- Self-cleaning indoor coil
- Condensate sensor connection
- Sleep mode
- Ultra quiet operation

Operating Range:**Outdoor Unit:**

Cooling (°F DB)	64-118
Heating (°F DB)	23-75

Indoor Unit:

Cooling (°F DB)	64-90
Heating (°F DB)	60-86

Unit Data:

Refrigerant Type	R410A
Refrigerant Control	Capillary Tube
Refrigerant Charge (lbs)	1.66
ODU Sound Pressure (±3 dB(A)) ³	47
IDU Sound Pressure ±3 (H/M/L/Sleep) dB(A) ³	39/33/25/19
ODU Net Unit Weight (lbs)	49
ODU Shipping Weight (lbs)	53
IDU Net Unit Weight (lbs)	20
IDU Shipping Weight (lbs)	25
Heat Exchanger Coating	GoldFin™

Fan:

ODU Type	Propeller
IDU Type	Cross Flow
Fan Speeds (Fan/Cooling/Heating)	4/4/4
Quantity (ODU + IDU)	1 + 1
Motor/Drive	Brushless Digitally Controlled/Direct
ODU Max Air Flow Rate (CFM)	953
IDU Air Flow Rate H/M/L (CFM)	353/272/212
Dehumidification (pts/hr)	2.76

Notes:

1. Acceptable operating voltage: 187V-253V.
2. Piping lengths are equivalent.
3. Sound Pressure levels are tested in an anechoic chamber under ISO Standard 1996.
4. All power/communication cable to be minimum 18 AWG, 4-conductor, stranded, shielded and must comply with applicable local and national code.
5. See Engineering Manual for sensible and latent capacities.
6. Power wiring cable size must comply with the applicable local and national code.
7. The indoor unit comes with a dry helium charge.
8. This data is rated 0 ft above sea level, with 24.6 ft of refrigerant line and a 0 ft level difference between outdoor and indoor units.
9. Must follow installation instructions in the applicable LG installation manual.

**Inverter**

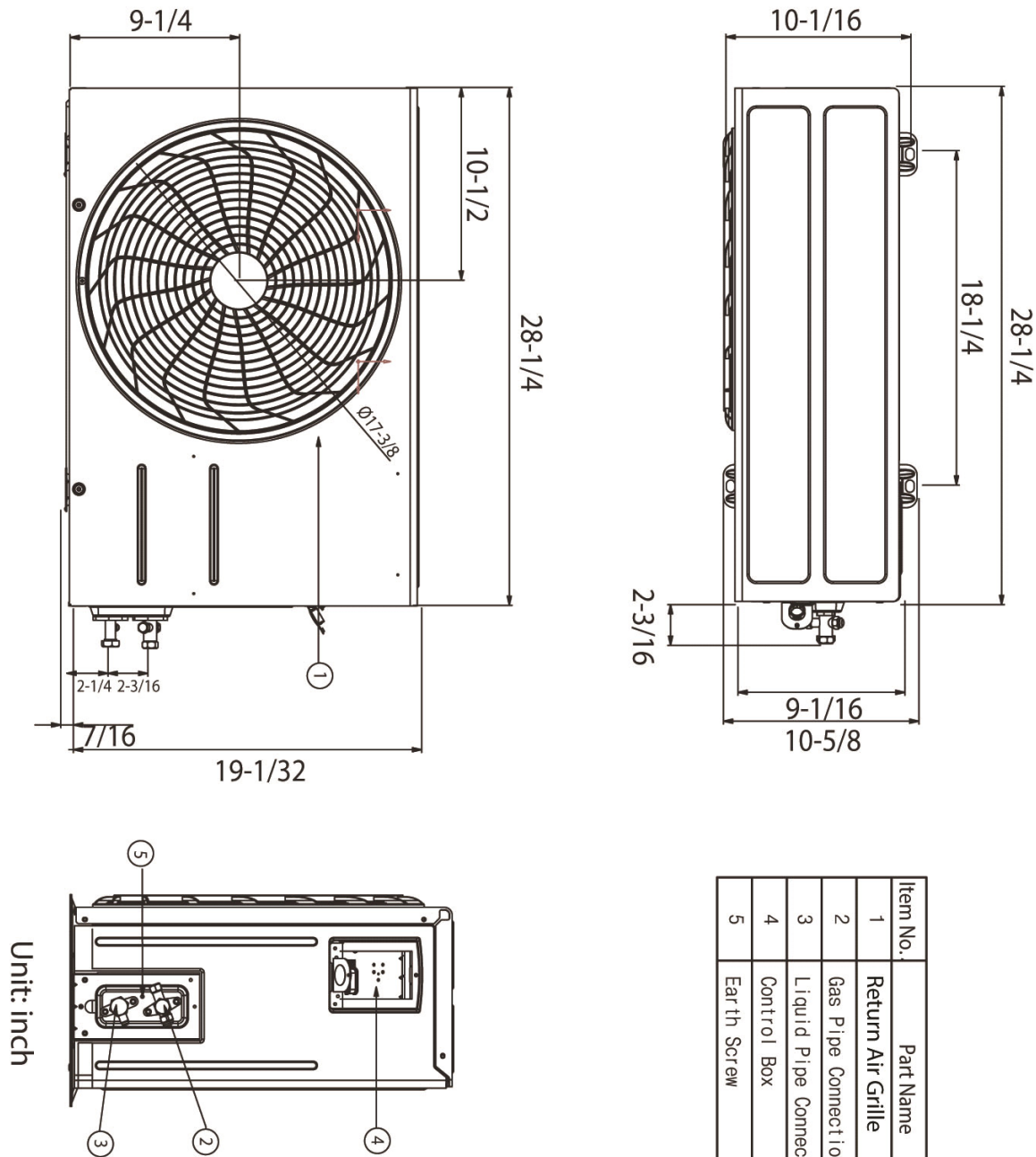
Outdoor Unit (ODU) - LSU120HEV
Mega Single Zone Inverter



Tag #: _____

Date: _____

Life's Good PO No.: _____



Item No.	Part Name	Remarks
1	Return Air Grille	
2	Gas Pipe Connection Port	
3	Liquid Pipe Connection Port	
4	Control Box	
5	Earth Screw	

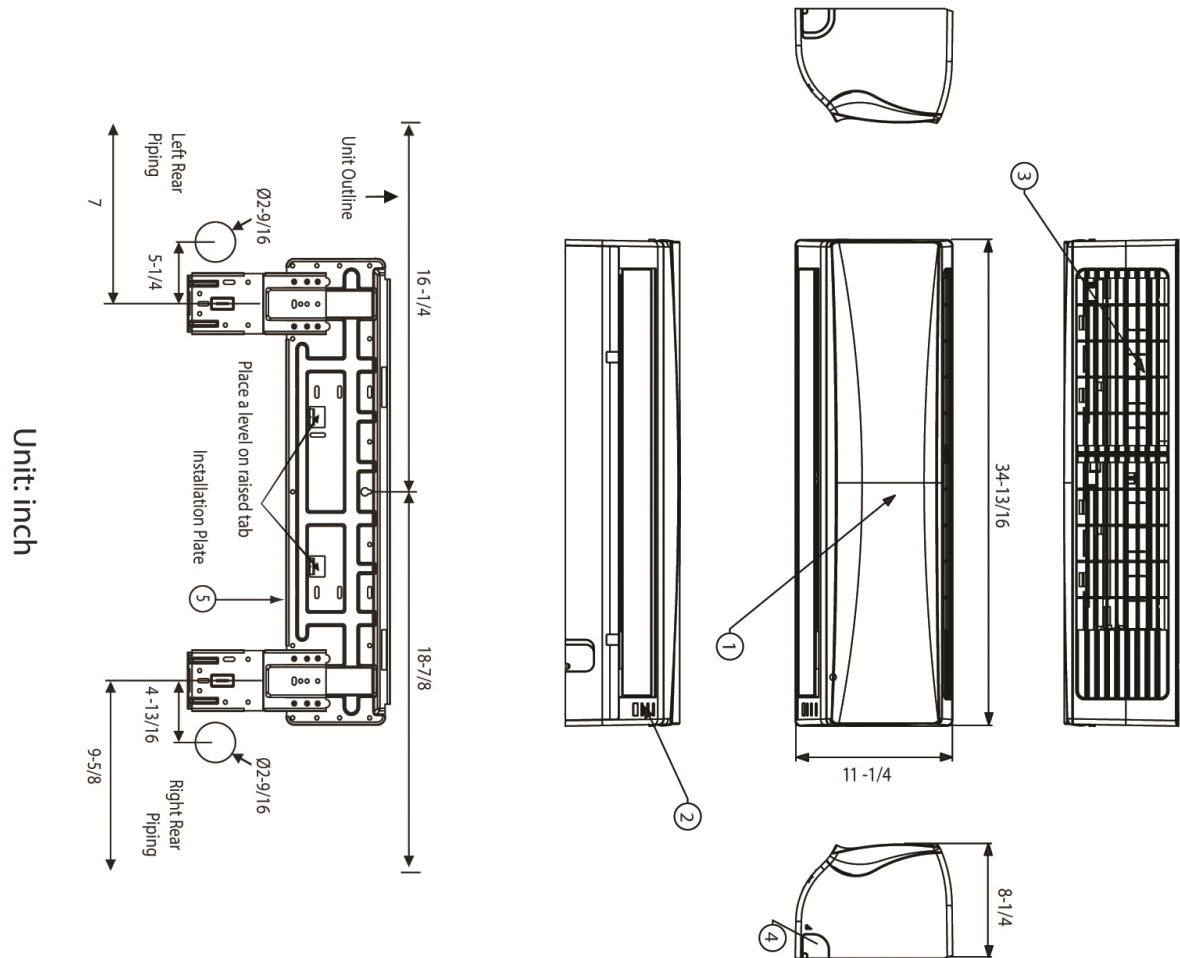
Indoor Unit (IDU) - LSN120HEV
Mega Single Zone Inverter



Tag #:

Date:

PO No.:



Item No.	Part Name	Remarks
1	Front Panel	
2	Display & Signal Receiver	
3	Return Air Grille	
4	Knockout hole	For pipe and cable
5	Installation Plate	

Job Name/Location:

Tag #:

Date:

For: ☐ File ☐ Resubmit

PO No.:

☐ Approval ☐ Other _____

Architect:

GC:

Engr:

Mech:

Rep:

(Company)

(Project Manager)

LS180HEV**Mega Single Zone Inverter**

Outdoor Unit (ODU) - LSU180HEV Indoor Unit (IDU) - LSN180HEV

**LG**
Life's Good**Performance:****Cooling:**

Capacity (Btu/h)	17,000
SEER	17.0
EER	10.95

SEER - Seasonal Energy Efficiency Ratio EER - Energy Efficiency Ratio

Heating:

Capacity (Btu/h)	19,000
HSPF	8.7

HSPF - Heating Seasonal Performance Factor

Cooling Nominal Test Conditions:

Indoor: 80°F DB/67°F WB

Outdoor: 95°F DB/75°F WB

Heating Nominal Test Conditions:

Indoor: 70°F DB/60°F WB

Outdoor: 47°F DB/43°F WB

Electrical:

Power Supply (V ¹ /Hz/Ø)	208-230/60/1
-------------------------------------	--------------

Outdoor Unit:

MOP (A)	20
MCA (A)	12
Cooling Rated Amps (A)	9.08
Heating Rated Amps (A)	9.68
Compressor (A)	9.28
Fan Motor (A)	0.4

MOP - Maximum Overcurrent Protection MCA - Minimum Circuit Ampacity

Total Power Input:

Cooling Power Input (kW)	1.55
Heating Power Input (kW)	1.59

Piping:

Liquid Line (in, OD)	1/4
Vapor Line (in, OD)	1/2
Additional Refrigerant (oz/ft)	0.33
Max Pipe Length (ft) ²	65.6
Piping Length (no add'l refrigerant, ft)	24.6
Max Elevation (ft)	32.8

Controls Features:

- 24-Hour on/off timer
- 2-Way (up/down) auto swing
- Auto changeover
- Auto restart
- Condensate sensor connection
- Energy saving
- Inverter (variable speed compressor)
- Jet cool
- Self-cleaning indoor coil
- Sleep mode
- Ultra quiet operation

Operating Range:**Outdoor Unit:**

Cooling (°F DB)	64-118
Heating (°F DB)	23-75

Indoor Unit:

Cooling (°F DB)	64-90
Heating (°F DB)	60-86

Unit Data:

Refrigerant Type	R410A
Refrigerant Control	Capillary Tube
Refrigerant Charge (lbs)	2.34
ODU Sound Pressure (±3 dB(A)) ³	51
IDU Sound Pressure ±3 (H/M/L/Sleep) dB(A) ³	42/40/35/29
ODU Net Unit Weight (lbs)	72
ODU Shipping Weight (lbs)	77
IDU Net Unit Weight (lbs)	28
IDU Shipping Weight (lbs)	30
Heat Exchanger Coating	GoldFin™

Fan:

ODU Type	Propeller
IDU Type	Cross Flow
Fan Speeds (Fan/Cooling/Heating)	4/4/4
Quantity (ODU + IDU)	1 + 1
Motor/Drive	Brushless Digitally Controlled/Direct
ODU Max Air Flow Rate (CFM)	1,342
IDU Air Flow Rate H/M/L (CFM)	512/441/353
Dehumidification (pts/hr)	3.39

Notes:

1. Acceptable operating voltage: 187V-253V.
2. Piping lengths are equivalent.
3. Sound Pressure levels are tested in an anechoic chamber under ISO Standard 1996.
4. All power/communication cable to be minimum 18 AWG, 4-conductor, stranded, shielded and must comply with applicable local and national code.
5. See Engineering Manual for sensible and latent capacities.
6. Power wiring cable size must comply with the applicable local and national code.
7. The indoor unit comes with a dry helium charge.
8. This data is rated 0 ft above sea level, with 24.6 ft of refrigerant line and a 0 ft level difference between outdoor and indoor units.
9. Must follow installation instructions in the applicable LG installation manual.

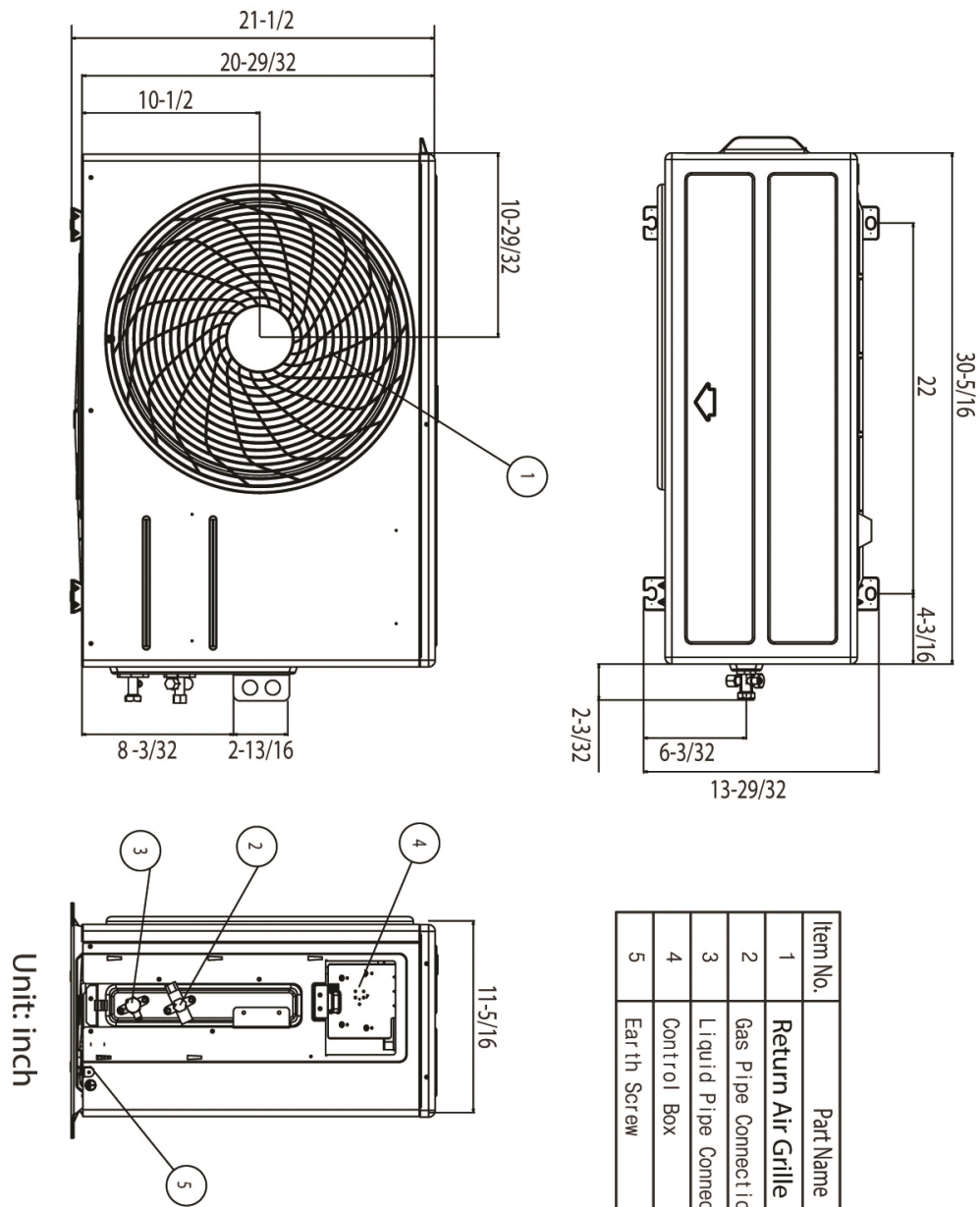
**Inverter**

Job Name/Location:

Outdoor Unit (ODU) - LSU180HEV
Mega Single Zone Inverter



Tag #: _____
Date: _____
PO No.: _____



Item No.	Part Name	Remarks
1	Return Air Grille	
2	Gas Pipe Connection Port	
3	Liquid Pipe Connection Port	
4	Control Box	
5	Earth Screw	

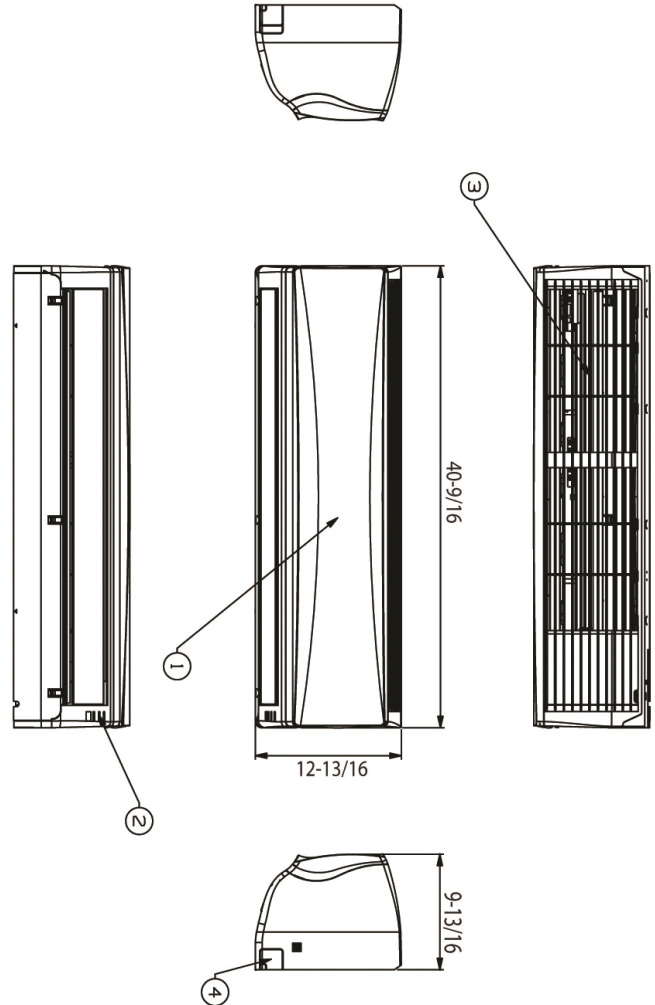
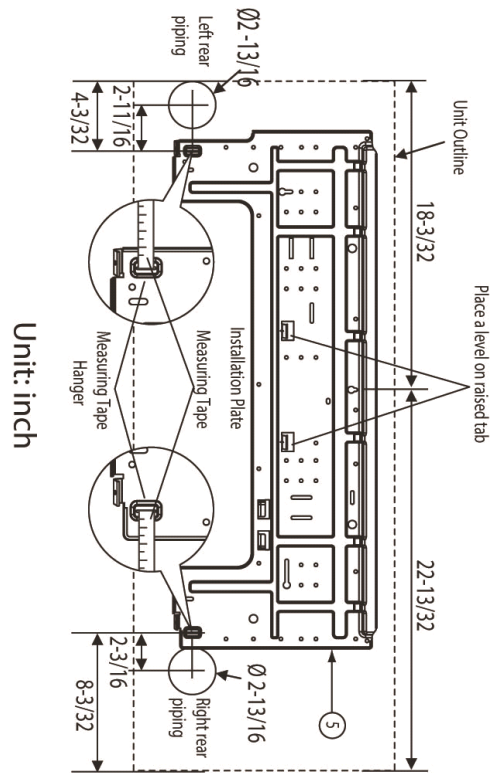
Indoor Unit (IDU) - LSN180HEV
Mega Single Zone Inverter



Tag #:

Date:

PO No.:



Item No.	Part Name	Remarks
1	Front Panel	
2	Display & Signal Receiver	
3	Return Air Grille	
4	Knockout hole	For pipe and cable
5	Installation Plate	

Job Name/Location:

Tag #:

Date:

For: ☐ File ☐ Resubmit

PO No.:

☐ Approval ☐ Other _____

Architect:

GC:

Engr:

Mech:

Rep:

(Company)

(Project Manager)

LS240HEV**Mega Single Zone Inverter**

Outdoor Unit (ODU) - LSU240HEV Indoor Unit (IDU) - LSN240HEV

**LG**
Life's Good**Performance:****Cooling:**

Capacity (Btu/h)	22,000
SEER	17.0
EER	10.75

SEER - Seasonal Energy Efficiency Ratio EER - Energy Efficiency Ratio

Heating:

Capacity (Btu/h)	22,000
HSPF	8.5

HSPF - Heating Seasonal Performance Factor

Cooling Nominal Test Conditions:

Indoor: 80°F DB/67°F WB

Outdoor: 95°F DB/75°F WB

Heating Nominal Test Conditions:

Indoor: 70°F DB/60°F WB

Outdoor: 47°F DB/43°F WB

Electrical:

Power Supply (V ¹ /Hz/Ø)	208-230/60/1
-------------------------------------	--------------

Outdoor Unit:

MOP (A)	20
MCA (A)	14
Cooling Rated Amps (A)	11.3
Heating Rated Amps (A)	10.1
Compressor (A)	9.6
Fan Motor (A)	0.48

MOP - Maximum Overcurrent Protection MCA - Minimum Circuit Ampacity

Total Power Input:

Cooling Power Input (kW)	2.05
Heating Power Input (kW)	1.94

Piping:

Liquid Line (in, OD)	1/4
Vapor Line (in, OD)	5/8
Additional Refrigerant (oz/ft)	0.33
Max Pipe Length (ft) ²	65.6
Piping Length (no add'l refrigerant, ft)	24.6
Max Elevation (ft)	32.8

Controls Features:

- 24-Hour on/off timer
- 2-Way (up/down) auto swing
- Auto changeover
- Auto restart
- Condensate sensor connection
- Energy saving
- Inverter (variable speed compressor)
- Jet cool
- Self-cleaning indoor coil
- Sleep mode
- Ultra quiet operation

Operating Range:**Outdoor Unit:**

Cooling (°F DB)	64-118
Heating (°F DB)	23-75

Indoor Unit:

Cooling (°F DB)	64-90
Heating (°F DB)	60-86

Unit Data:

Refrigerant Type	R410A
Refrigerant Control	Capillary Tube
Refrigerant Charge (lbs)	2.58
ODU Sound Pressure (±3 dB(A)) ³	53
IDU Sound Pressure ±3 (H/M/L/Sleep) dB(A) ³	45/40/35/29
ODU Net Unit Weight (lbs)	92
ODU Shipping Weight (lbs)	104
IDU Net Unit Weight (lbs)	28
IDU Shipping Weight (lbs)	34
Heat Exchanger Coating	GoldFin™

Fan:

ODU Type	Propeller
IDU Type	Cross Flow
Fan Speeds (Fan/Cooling/Heating)	4/4/4
Quantity (ODU + IDU)	1 + 1
Motor/Drive	Brushless Digitally Controlled/Direct
ODU Max Air Flow Rate (CFM)	1,766
IDU Air Flow Rate H/M/L (CFM)	600/494/388
Dehumidification (pts/hr)	4.88

Notes:

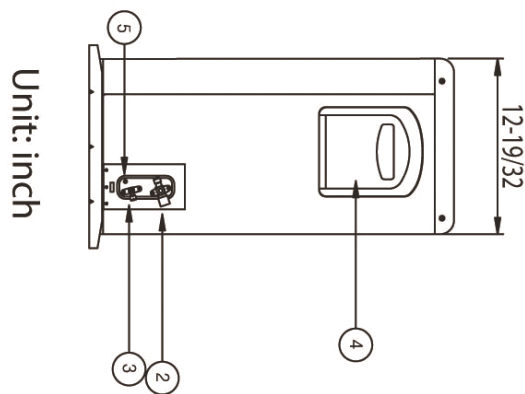
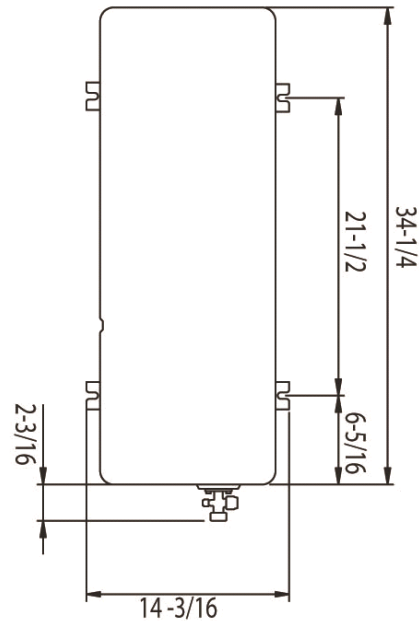
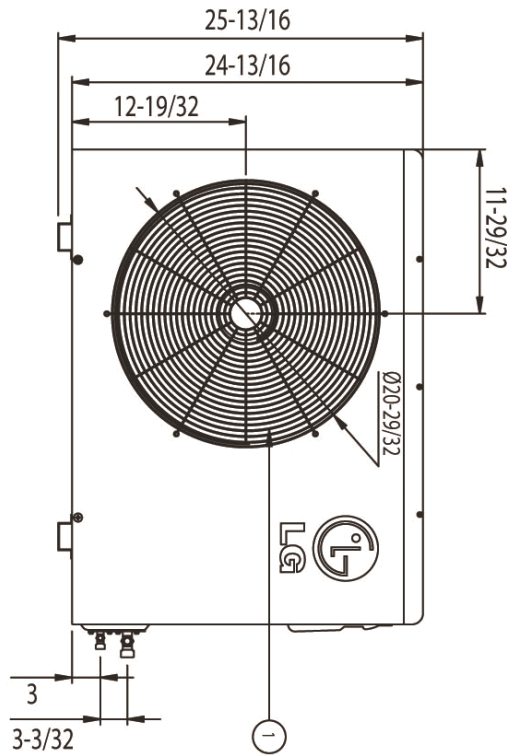
1. Acceptable operating voltage: 187V-253V.
2. Piping lengths are equivalent.
3. Sound Pressure levels are tested in an anechoic chamber under ISO Standard 1996.
4. All power/communication cable to be minimum 18 AWG, 4-conductor, stranded, shielded and must comply with applicable local and national code.
5. See Engineering Manual for sensible and latent capacities.
6. Power wiring cable size must comply with the applicable local and national code.
7. The indoor unit comes with a dry helium charge.
8. This data is rated 0 ft above sea level, with 24.6 ft of refrigerant line and a 0 ft level difference between outdoor and indoor units.
9. Must follow installation instructions in the applicable LG installation manual.

**Inverter**

Outdoor Unit (ODU) - LSU240HEV
Mega Single Zone Inverter



Tag #: _____
Date: _____
PO No.: _____



Unit: inch

Item No.	Part Name	Remarks
1	Return Air Grille	
2	Gas Pipe Connection Port	
3	Liquid Pipe Connection Port	
4	Control Box	
5	Earth Screw	

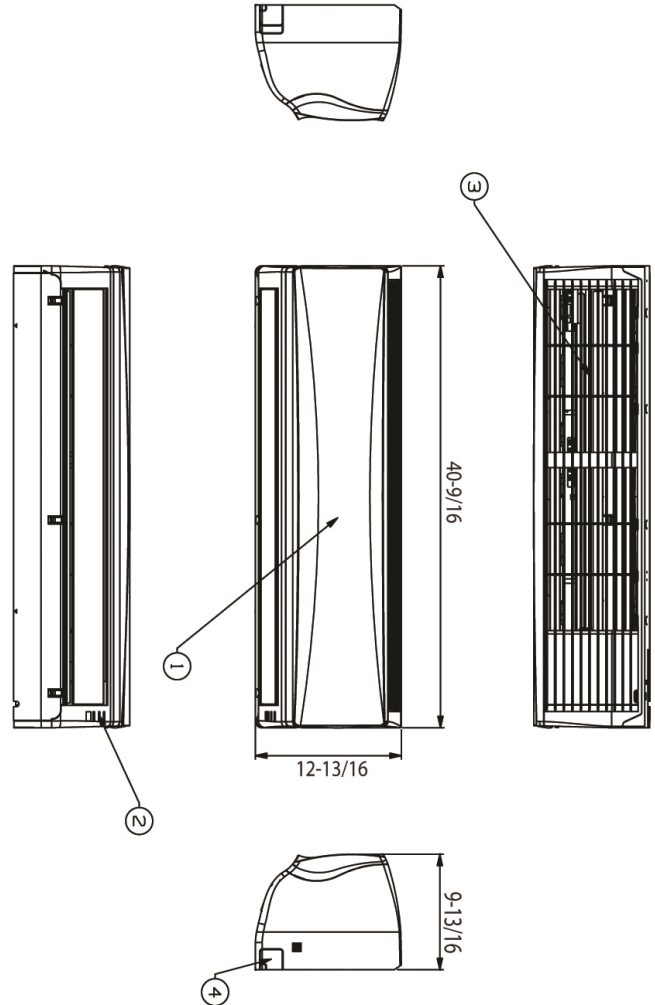
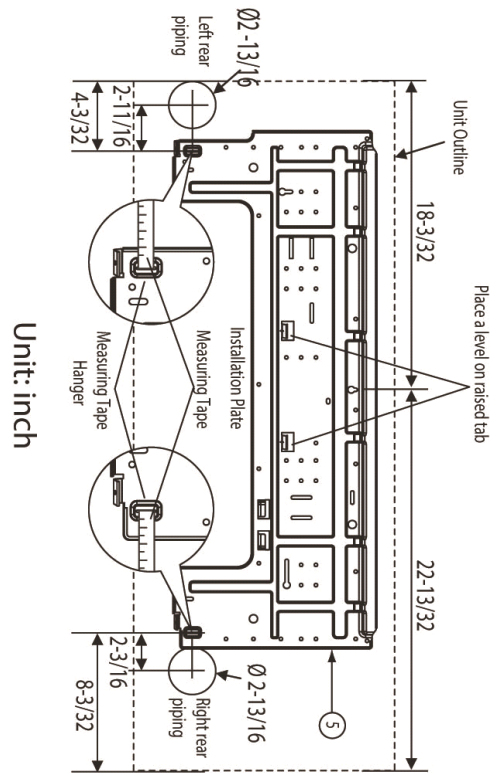
Indoor Unit (IDU) - LSN240HEV
Mega Single Zone Inverter



Tag #:

Date:

PO No.:



Item No.	Part Name	Remarks
1	Front Panel	
2	Display & Signal Receiver	
3	Return Air Grille	
4	Knockout hole	For pipe and cable
5	Installation Plate	