



Benefits of High Static Ducted Single-Zone Split Systems

- Inverter technology
- Available in 24,000 or 36,000 Btu/h capacities
- All-season use—heat pump models for both cooling and heating capabilities
- Operating ranges for outdoor units of 5°F to 118°F (DB) for cooling; 0°F to 64°F (WB) for heating
- Operating ranges for indoor units of 64°F to 86°F (WB) for cooling; 60°F to 86°F (DB) for heating
- Quiet operation inside and out



About LG Electronics, Inc.

LG Electronics, Inc. is a global leader and technology innovator in consumer electronics, mobile communications, and home appliances, employing more than 213,000 people in more than 60 countries worldwide. LG's commercial air conditioning business unit was established in 1968, and offers VRF, Multi F, duct-free split systems, packaged terminal air conditioners (PTACs), and room air conditioners.

With LG, it's all possible.™

High Static Ducted

Single-Zone Split System

Split systems are comprised of two major components—indoor units and outdoor units—that are connected through refrigerant piping and power wiring / communications cable. These Inverter heat pump systems provide a smart alternative to both central HVAC and window-mounted air conditioners, and are available in a variety of configurations to suit different cooling and heating situations. Installation by a qualified HVAC contractor is safe and easy.

High Static Ducted Systems

LG's High Static Ducted split systems can be used in those rooms that require concealed installation. These systems are suited in light commercial applications or large, open spaces, and is a useful alternative when wall space is limited. Choose from 2 and 3 ton capacities; both include a wired wall controller for easy control.



Inverter Technology

Inverter variable-speed split systems are measurably quieter and consume less energy than conventional air conditioners. The Inverter compressor ramps up or down to match the required room capacity and maintain the comfort level. When the selected temperature is reached, the Inverter compressor operates at low speed to maintain that comfort level, thereby using less energy.

Quality Commitment

LG is committed to the success of air-conditioning projects. We provide technical support during installation, and offer a variety of classes designed for installers and service providers. Classes are conducted at LG's training centers and in field locations at various times throughout the year and upon special request.

High Static Ducted Single-Zone Split Systems

LH247HV

24,000 Btu/h Cooling
27,000 Btu/h Heating



LH367HV

36,000 Btu/h Cooling
40,000 Btu/h Heating



Inverter



Features

- Inverter (Variable speed compressor)
- Gold Fin™ anti-corrosion
- External static pressure control
- Built-in condensate pump
- Dehumidifying mode
- Auto operation / restart
- Cooling / heating / fan modes
- 24-Hour on-off timer
- Two thermistor control
- Control lock function
- Quiet operation
- Includes wired remote controller

Warranty: Five (5) years parts; seven (7) years compressor.

| System Model Number | | LH247HV | LH367HV |
|---|---------------------|--------------------------------|------------------------------|
| Indoor Unit Model Number | | LHN247HV | LHN367HV |
| Outdoor Unit Model Number | | LUU247HV | LUU367HV |
| Rated Cooling Capacity (Btu/h) | | 24,000 | 36,000 |
| Rated Heating Capacity (Btu/h) | | 27,000 | 40,000 |
| EER | | 12.0 | 12.1 |
| SEER | | 17.0 | 17.6 |
| HSPF | | 10.0 | 9.2 |
| Air Circulation | CFM (H/M/L) | 688 / 618 / 530 | 1,130 / 953 / 706 |
| Fan Speeds (Fan / Cooling / Heating) | | 3 / 3 / 3 | 3 / 3 / 3 |
| Dehumidification | pts. / hr. | 7.0 | 10.6 |
| Thermostat Range | Cooling (°F WB) | 64 - 86 | 64 - 86 |
| | Heating (°F DB) | 60 - 86 | 60 - 86 |
| Indoor Unit Sound Pressure Levels | dB(A) (H / M / L) | 38 / 36 / 35 | 39 / 38 / 37 |
| Outdoor Unit Sound Pressure Level | dB(A) (Cool / Heat) | 48 / 52 | 52 / 54 |
| Power Supply (Outdoor and Indoor, Phase / V / Hz) | | 1 / 208-230 / 60 | 1 / 208-230 / 60 |
| Indoor Unit Dimensions | | | |
| W x H x D | in. | 46-17/32 x 11-23/32 x 17-23/32 | 48-7/16 x 14-31/32 x 23-7/32 |
| Net Unit Weight | lbs. | 72.8 | 124.6 |
| Outdoor Unit Dimensions | | | |
| W x H x D | in. | 37-13/32 x 32-27/32 x 13 | 37-13/32 x 54-11/32 x 13 |
| Net Unit Weight | lbs. | 132.3 | 202.8 |

Job Name/Location:

Tag #:

Date:

For: ☐ File ☐ Resubmit

PO No.:

☐ Approval ☐ Other _____

Architect:

GC:

Engr:

Mech:

Rep:

(Company)

(Project Manager)

LH247HV

Single Zone High Static Duct

Outdoor Unit (ODU) - LUU247 Indoor Unit (IDU) - LHN247HV



PQRVCLOQW

**Performance:****Cooling:**

| | |
|------------------|--------|
| Capacity (Btu/h) | 24,000 |
| SEER | 17.0 |
| EER | 12.0 |

SEER - Seasonal Energy Efficiency Ratio EER - Energy Efficiency Ratio

Heating:

| | |
|------------------|--------|
| Capacity (Btu/h) | 27,000 |
| HSPF | 10.0 |

HSPF - Heating Seasonal Performance Factor

Cooling Nominal Test Conditions: Heating Nominal Test Conditions:

Indoor: 80°F DB/67°F WB Indoor: 70°F DB/60°F WB
 Outdoor: 95°F DB/75°F WB Outdoor: 47°F DB/43°F WB

Electrical:

| | |
|-------------------------------------|--------------|
| Power Supply (V ¹ /Hz/Ø) | 208-230/60/1 |
| MOP (A) | 30 |
| MCA (A) | 18.1 |
| Cooling Rated Amps (A) | 15.1 |
| Heating Rated Amps (A) | 15.1 |
| Compressor (A) | 13.5 |
| Fan Motor (A) | 0.6 |
| Cooling Power Input (kW) | 2.00 |
| Heating Power Input (kW) | 2.28 |

MOP - Maximum Overcurrent Protection MCA - Minimum Circuit Ampacity

Piping:

| | |
|--|------|
| Liquid Line (in, OD) | 3/8 |
| Vapor Line (in, OD) | 5/8 |
| Additional Refrigerant (oz/ft) | 0.43 |
| Max Pipe Length (ft) ² | 164 |
| Pipe Length (no add'l Refrigerant, ft) | 25 |
| Max Elevation (ft) | 98 |

Features:

- ESP control
- Hot start
- Inverter (variable speed fan)
- Internal condensate pump
- Auto restart
- Control lock function
- Group control
- Timer (on/off)
- Sleep mode

Included Accessories:

- Simple Controller with Mode (White) - PQRVCLOQW

Optional Accessories (sold separately)

- ☐ LG Programmable Controller - PREMTB10U
- ☐ Dry Contact Unit Dry Contact Unit (1 contact, 24 VAC external power) - PQDSB1
- ☐ AC Ez - PQCSZ250S0

Operating Range:**Outdoor Unit:**

| | |
|-----------------|-------|
| Cooling (°F DB) | 5-118 |
| Heating (°F WB) | 0-64 |

Indoor Unit:

| | |
|---------------------|-------|
| Cooling (°F WB) | 57-77 |
| IDU Heating (°F DB) | 59-81 |

Unit Data:

| | |
|--|----------|
| Refrigerant Type | R410A |
| Refrigerant Control | EEV |
| Refrigerant Charge (lbs) | 4.4 |
| ODU Sound Pressure Max (Cool/Heat) ±3 dB(A) ³ | 48/52 |
| IDU Sound Pressure (H/M/L) ±3 dB(A) ³ | 38/36/35 |
| ODU Net Weight (lbs) | 133 |
| ODU Shipping Weight (lbs) | 146 |
| IDU Net Weight (lbs) | 73 |
| IDU Shipping Weight (lbs) | 95 |

Fan:

| | |
|--------------------------------------|---------------------------------------|
| ODU Type | Propeller |
| IDU Type | Sirocco |
| Fan Speeds (Fan/Cooling/Heating) | 3/3/3 |
| Fan Quantity (ODU + IDU) | 1 + 1 |
| Motor/Drive | Brushless Digitally Controlled/Direct |
| ODU Air Circulation (CFM) | 2048 |
| IDU Air Circulation H/M/L (CFM) | 688/618/530 |
| Max External Static Pressure (in wg) | 0.39 |
| Dehumidification Rate (pts/hr) | 7.0 |

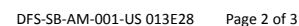
Notes:

1. Acceptable operating voltage: 187V-253V.
2. Piping lengths are equivalent.
3. Sound Pressure levels are tested in an anechoic chamber under ISO Standard 1996.
4. All communication/power cable to be minimum 18 American wire gauge (AWG), 4-conductor, stranded, shielded and must comply with applicable local and national code.
5. See Engineering Manual for sensible and latent capacities.
6. Power wiring cable size must comply with the applicable local and national code.
7. The indoor unit comes with a dry helium charge.
8. This data is rated 0 ft above sea level, with 25 ft of refrigerant line and a 0 ft level difference between outdoor and indoor units.
9. Must follow installation instructions in the applicable LG installation manual.

Inverter



Outdoor Unit (ODU) - LUU247HV



Indoor Unit (IDU) - LHN247HV

Single Zone High Static Duct

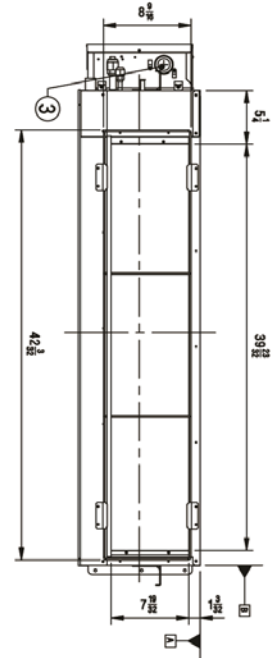


Tag #:

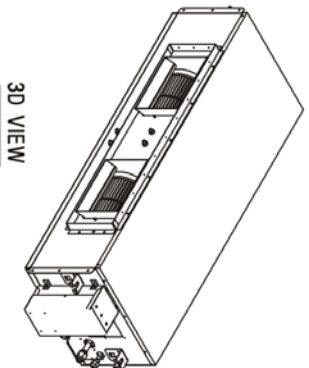
Date:

PO No.:

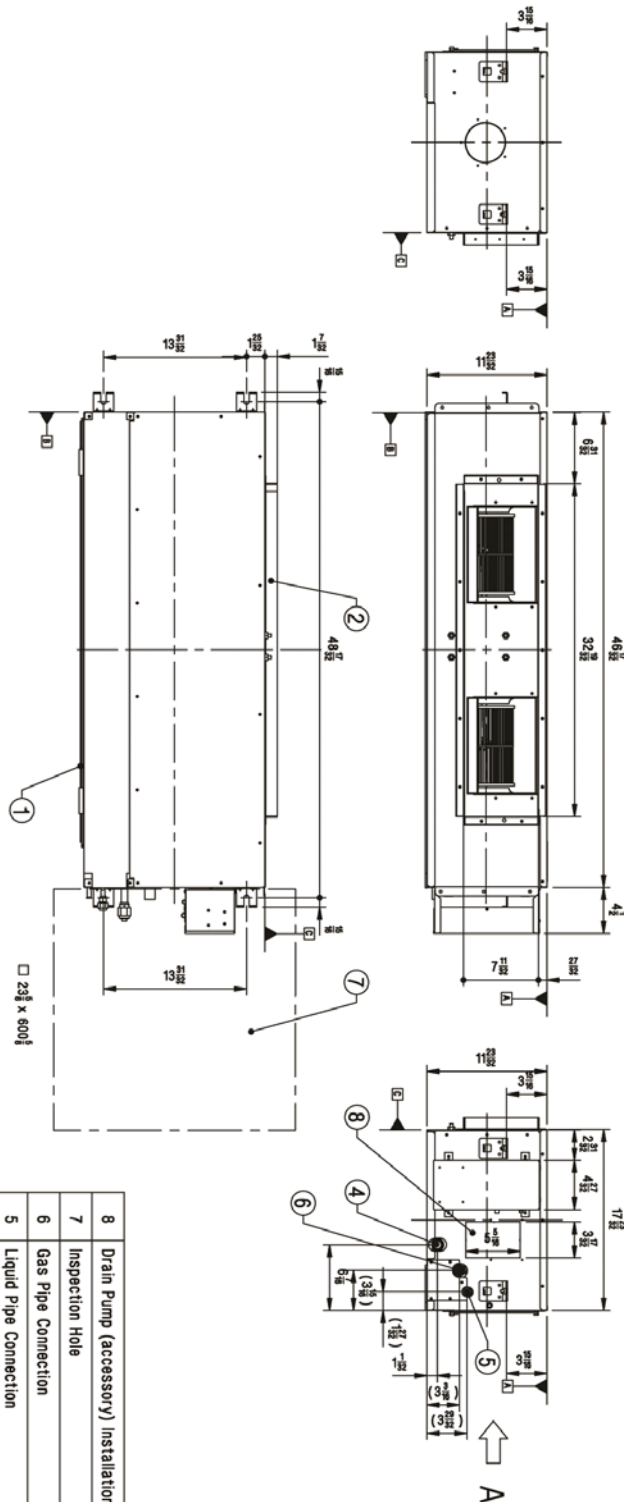
[Unit: inch]



View A



3D VIEW



Symbols

Datum line

View Direction

| No. | Part Name | Description |
|-----|---|----------------|
| 1 | Air Intake | - |
| 2 | Air Outlet | - |
| 3 | Power and Communication cable & Wired Remote Controller Wire Routing Hole | - |
| 4 | Drain Pipe Connection | - |
| 5 | Liquid Pipe Connection | - |
| 6 | Gas Pipe Connection | - |
| 7 | Inspection Hole | - |
| 8 | Drain Pump (accessory) Installation Hole | Knock out Type |

Job Name/Location:

Tag #:

Date:

PO No.:

For: ☐ File ☐ Resubmit☐ Approval ☐ Other _____

Architect:

GC:

Engr:

Mech:

Rep:

(Company)

(Project Manager)

LH367HV

Single Zone High Static Duct

Outdoor Unit (ODU) - LUU367 Indoor Unit (IDU) - LHN367HV



PQRVCLOQW

**Performance:****Cooling:**

| | |
|------------------|--------|
| Capacity (Btu/h) | 36,000 |
| SEER | 17.60 |
| EER | 12.1 |

SEER - Seasonal Energy Efficiency Ratio EER - Energy Efficiency Ratio

Heating:

| | |
|------------------|--------|
| Capacity (Btu/h) | 40,000 |
| HSPF | 9.20 |

HSPF - Heating Seasonal Performance Factor

Cooling Nominal Test Conditions: Heating Nominal Test Conditions:

Indoor: 80°F DB/67°F WB

Indoor: 70°F DB/60°F WB

Outdoor: 95°F DB/75°F WB

Outdoor: 47°F DB/43°F WB

Electrical:

| | |
|-------------------------------------|--------------|
| Power Supply (V ¹ /Hz/Ø) | 208-230/60/1 |
| MOP (A) | 40 |
| MCA (A) | 24.5 |
| Cooling Rated Amps (A) | 20.8 |
| Heating Rated Amps (A) | 21.4 |
| Compressor (A) | 18.6 |
| Fan Motor (A) | 1.2 |
| Cooling Power Input (kW) | 2.91 |
| Heating Power Input (kW) | 3.36 |

MOP - Maximum Overcurrent Protection MCA - Minimum Circuit Ampacity

Piping:

| | |
|--|------|
| Liquid Line (in, OD) | 3/8 |
| Vapor Line (in, OD) | 5/8 |
| Additional Refrigerant (oz/ft) | 0.43 |
| Max Pipe Length (ft) ² | 246 |
| Pipe Length (no add'l Refrigerant, ft) | 25 |
| Max Elevation (ft) | 98 |

Features:

- ESP control
- Hot start
- Inverter (variable speed fan)
- Internal condensate pump
- Auto restart
- Control lock function
- Group control
- Timer (on/off)
- Sleep mode

Included Accessories:

- Simple Controller with Mode (White) - PQRVCLOQW

Optional Accessories (sold separately)

- ☐ LG Programmable Controller - PREMTB10U
- ☐ Dry Contact Unit Dry Contact Unit (1 contact, 24 VAC external power) - PQDSB1
- ☐ AC Ez - PQCSZ250S0

Operating Range:**Outdoor Unit:**

| | |
|-----------------|-------|
| Cooling (°F DB) | 5-118 |
| Heating (°F WB) | 0-64 |

Indoor Unit:

| | |
|---------------------|-------|
| Cooling (°F WB) | 57-77 |
| IDU Heating (°F DB) | 59-81 |

Unit Data:

| | |
|--|----------|
| Refrigerant Type | R410A |
| Refrigerant Control | EEV |
| Refrigerant Charge (lbs) | 7.4 |
| ODU Sound Pressure Max (Cool/Heat) ±3 dB(A) ³ | 52/54 |
| IDU Sound Pressure (H/M/L) ±3 dB(A) ³ | 39/38/37 |
| ODU Net Weight (lbs) | 203 |
| ODU Shipping Weight (lbs) | 227 |
| IDU Net Weight (lbs) | 125 |
| IDU Shipping Weight (lbs) | 139 |

Fan:

| | |
|--------------------------------------|---------------------------------------|
| ODU Type | Propeller |
| IDU Type | Sirocco |
| Fan Speeds (Fan/Cooling/Heating) | 3/3/3 |
| Fan Quantity (ODU + IDU) | 2 + 1 |
| Motor/Drive | Brushless Digitally Controlled/Direct |
| ODU Air Circulation (CFM) | 1,942 x 2 |
| IDU Air Circulation H/M/L (CFM) | 1,130/953/706 |
| Max External Static Pressure (in wg) | 0.39 |
| Dehumidification Rate (pts/hr) | 10.6 |

Notes:

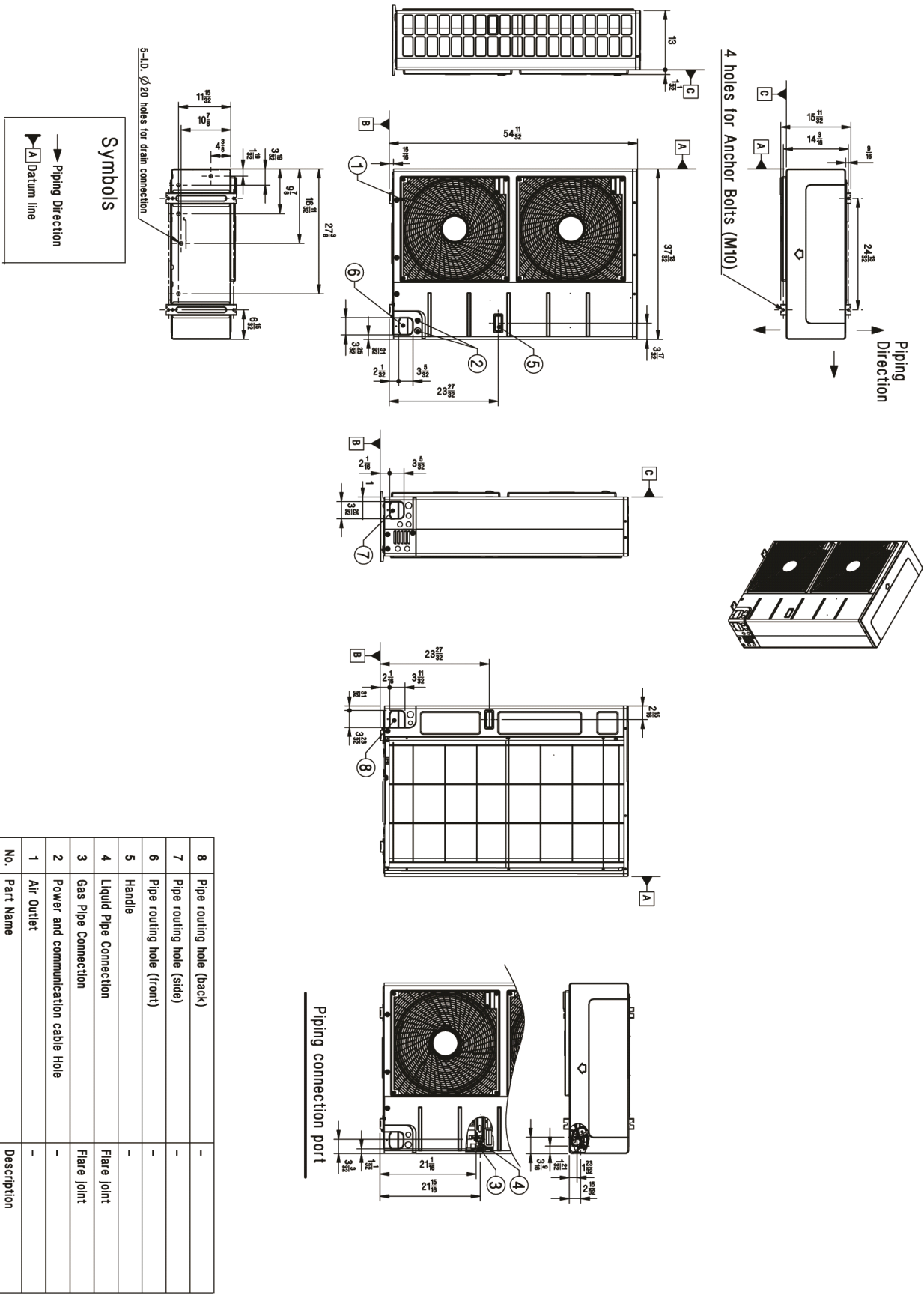
1. Acceptable operating voltage: 187V-253V.
2. Piping lengths are equivalent.
3. Sound Pressure levels are tested in an anechoic chamber under ISO Standard 1996.
4. All communication/power cable to be minimum 18 American wire gauge (AWG), 4-conductor, stranded, shielded and must comply with applicable local and national code.
5. See Engineering Manual for sensible and latent capacities.
6. Power wiring cable size must comply with the applicable local and national code.
7. The indoor unit comes with a dry helium charge.
8. This data is rated 0 ft above sea level, with 25 ft of refrigerant line and a 0 ft level difference between outdoor and indoor units.
9. Must follow installation instructions in the applicable LG installation manual.



Outdoor Unit (ODU) - LUU367HV
Single Zone High Static Duct



Tag #: _____
Date: _____
PO No.: _____



Indoor Unit (IDU) - LHN367HV

Single Zone High Static Duct

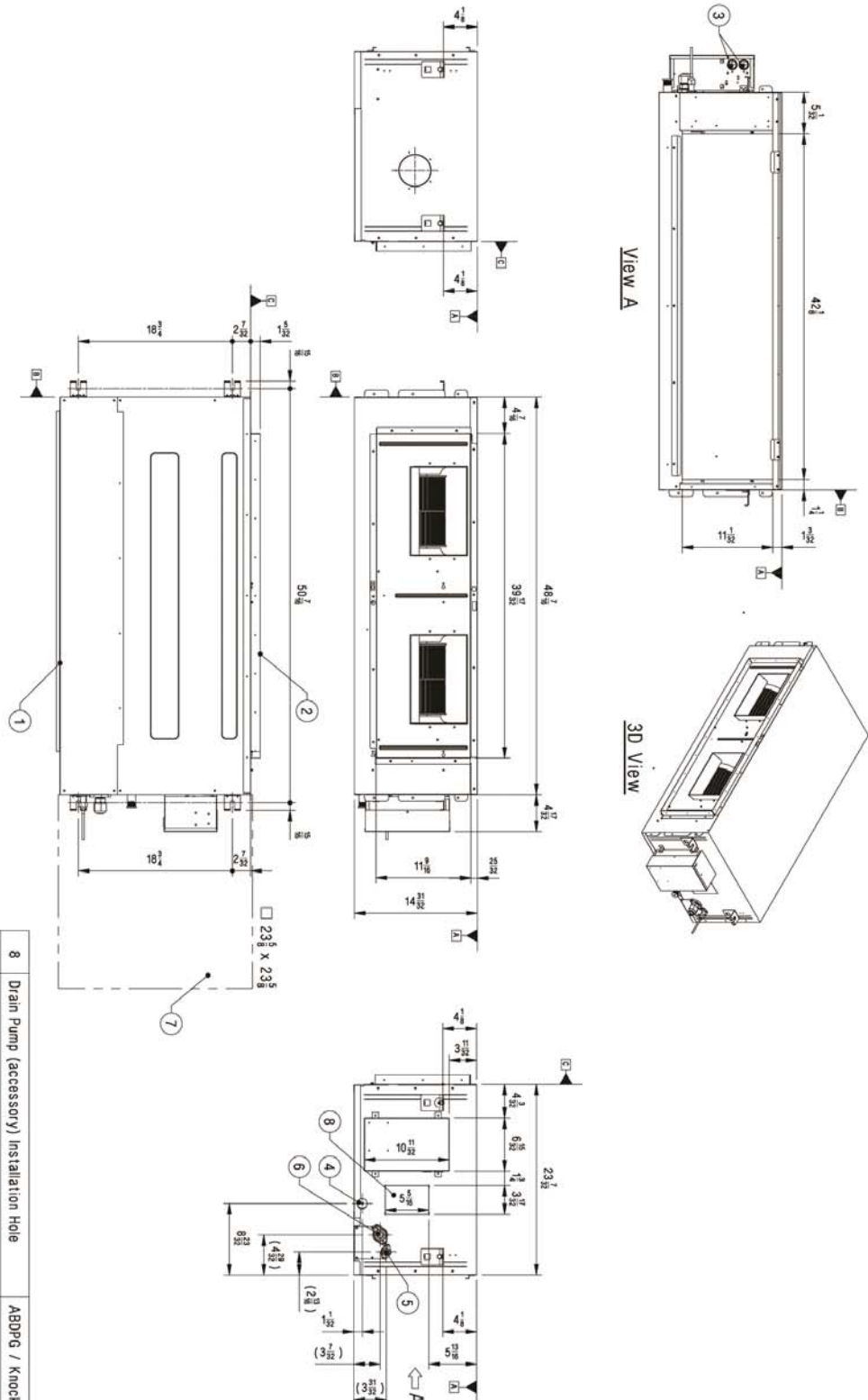
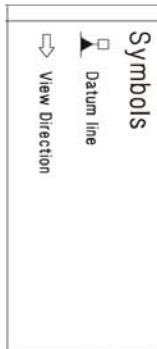


Tag #:

Date:

PO No.:

[Unit: inch]



| No. | Part Name | Description |
|-----|--|------------------------|
| 1 | Air Intake | - |
| 2 | Air Outlet | - |
| 3 | Drain Pump (accessory) Installation Hole | ABDP6 / Knock out Type |
| 4 | Inspection Hole | - |
| 5 | Gas Pipe Connection | - |
| 6 | Liquid Pipe Connection | - |
| 7 | Drain Pipe Connection | - |
| 8 | Power and Communication cable Hole & Wired Remote Controller Wire Routing Hole | - |